

Sample gas probe GAS 222.21

In many applications gas analysis is the key for safe and efficient control of process flows, environmental protection and quality assurance. In extractive gas analysis the location of the gas sampling point is crucial for the reproducibility and accuracy of the analysis results.

The specific filter capacity, corrosion resistance and functional equipment requirements for the probe arise from the composition of the sample gas.

However, operating costs are also an important criterion in the selection, as the sampling points are frequently located at hard to access points in the system. Effective particle filter backwashing options and low maintenance characterise the extensive GAS probe series.

Heated probe with shut-off valve, inlet and/or downstream filter and weather hood

The downstream filter can easily be removed by turning the handle 90°

The probe body and the area around the screw connection for the heated sample gas line are completely isolated

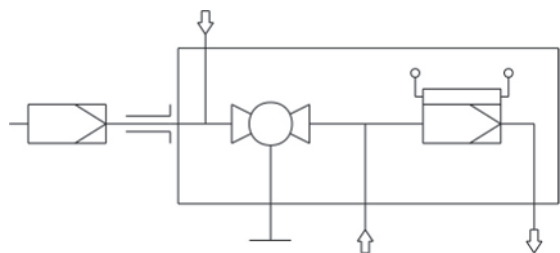
Electronic temperature controller up to 395 °F with low/high temperature alarm and display

For dust loads up to 2 g/m³
With upstream filter 10 g/m³ and up

This probe is not suitable for use in Ex areas



Flow chart



Technical Data

Gas Probe Technical Data

Probe operating temperature:	max. 392 °F	
Ambient temperature without accessories:	-4 to 158 °F	
Ambient temperature with accessories:	Component	Ambient temperature range
	Compressed air valve:	14 °F < T _{amb} < 131 °F
	Pneumatic drive:	-4 °F < T _{amb} < 176 °F
	Limit switch:	-4 °F < T _{amb} < 212 °F
	Solenoid valve for pneumatic drive:	14 °F < T _{amb} < 131 °F
Medium temperature (blowback):	Component	Medium temperature range
	Compressed air valve:	14 °F to 176 °F
	Solenoid valve for pneumatic drive:	14 °F to 212 °F
Regulator setting range:	50 to 392 °F	
Low/high temperature alarm:	Alarm adjustable ±5.....30 K from setpoint, factory preset to 15 K, max. switching current 1 A	
Electrical data:	230 V, 2.0 A, 50/60 Hz 115 V, 3.8 A, 50/60 Hz	
IP rating:	IP54	
Max. operating pressure:	85 psia	
Materials in contact with media		
Flange:	Stainless steel 1.4571	
Probe body:	Stainless steel 1.4571	
Ball valve:	Stainless steel 1.4408/1.4462/PTFE	
Seal:	Stainless steel 1.4404/graphite/and see filter	

Ordering Instructions

The item number is a code for the configuration of your unit. Please use the following model key:

4622221	X	9	9	0	X	X	X	X	X	X	X	X	X	X	X	Product Characteristics
																Flange
0																DIN DN65 PN6
2																ANSI 3"-150 lbs - without CSA C & US approval
																Power supply sample probe
1																115 V
2																230 V
																Calibrating gas connection
0																No calibrating gas connection
1																6 mm
2																6 mm + check valve
3																1/4"
4																1/4" + check valve
																Connection heated extension
0																No
1																Yes
																Built-in temperature controller for heated extension ¹⁾
0																No
1																Yes
																Blowback with air reservoir ²⁾
																Air reservoir heating
1																Yes
9																No
																Built-in blowback control ¹⁾
1																Internal controller
9																No
																Compressed air valve / valve voltage information
0																Manual
1																115 V
2																230 V
3																24 V
9																None (if no blowback requested)
																Pneumatic drive for ball valve
0																Manual
1																Monostable pressure-free open
2																Monostable pressure-free closed
3																Bi-stable
																Limit switch for pneumatic drive
1																Yes
9																No
																Control valve for pneumatic drive
3																3/2-way valve
5																5/2-way valve
9																No control valve

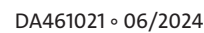
¹⁾ The electronics can either be equipped with temperature controller for heated extension or blowback control.

²⁾ For flammable sample gas, always use inert gas for blowback. Probe blowback prohibited when using explosive gases!

Options

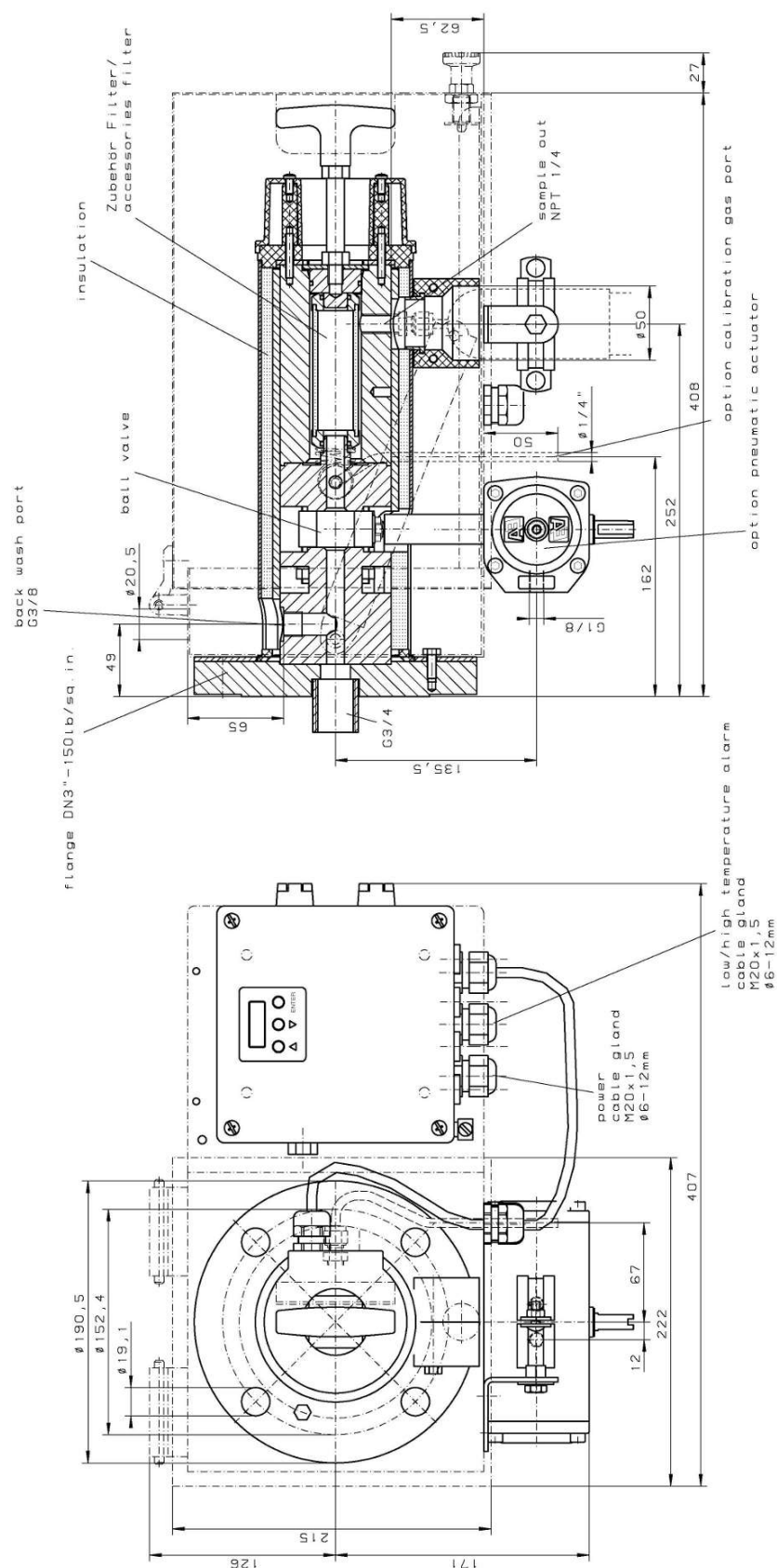
The base unit becomes functional by adding accessories suitable for the application. Please refer to accessory data sheet no. 461099 for information.

Please also refer to data sheet no. 461000 "GAS 222 Gas Probes" for a general description.



Dimensions (ANSI flange)

NOTICE! ANSI flange only available without CSA approval.



Part-No.	4622221C	4622225C
- materials	1 4571/S9316TI	
flange, head	1 4404/S9316L/1	1 4408/CF-8M/PTFE
ball valve	max. 200°C / 392°F	
- operating temp. probe	230V 50/60Hz	115V 50/60Hz
- heater	440W	425W
temperature range	50-200°C / 122-392°F	
alarm adjustable	±5 bis 30°C / ±9 up to 54°F	
factory set	from set-point	
max. current	115°C / 127°F	
degree of protection	IP54	
- ambient temperature	-20 up to +70°C / - 4 up to +158°F	
- pilot pressure pneumatic actuator	6 bar	

[illegible]