



## Sample Gas Filter AGF-T-30

Even if the particular contaminant has already been removed at the extraction point through effective particle filtration inside the gas sampling probe, in long or branched sample gas line there is a risk of secondary contamination. Additional filters are therefore often installed at the point where the sample gas enters the analysis system and also before delicate system components. The filter housings must be made of corrosion-resistant, non-absorbent materials, easy to install and easy to maintain. They should further be compatible with various filter elements.

The AGF-T-30 series has a PTFE and glass housing. The filter head has an additional connection for installing a moisture detector. A variety of materials is available based on the application.

Full PTFE housing top

Maximum chemical resistance, for use in highly aggressive mediums

Filter fineness of 2 µm or 25 µm with sintered PTFE elements

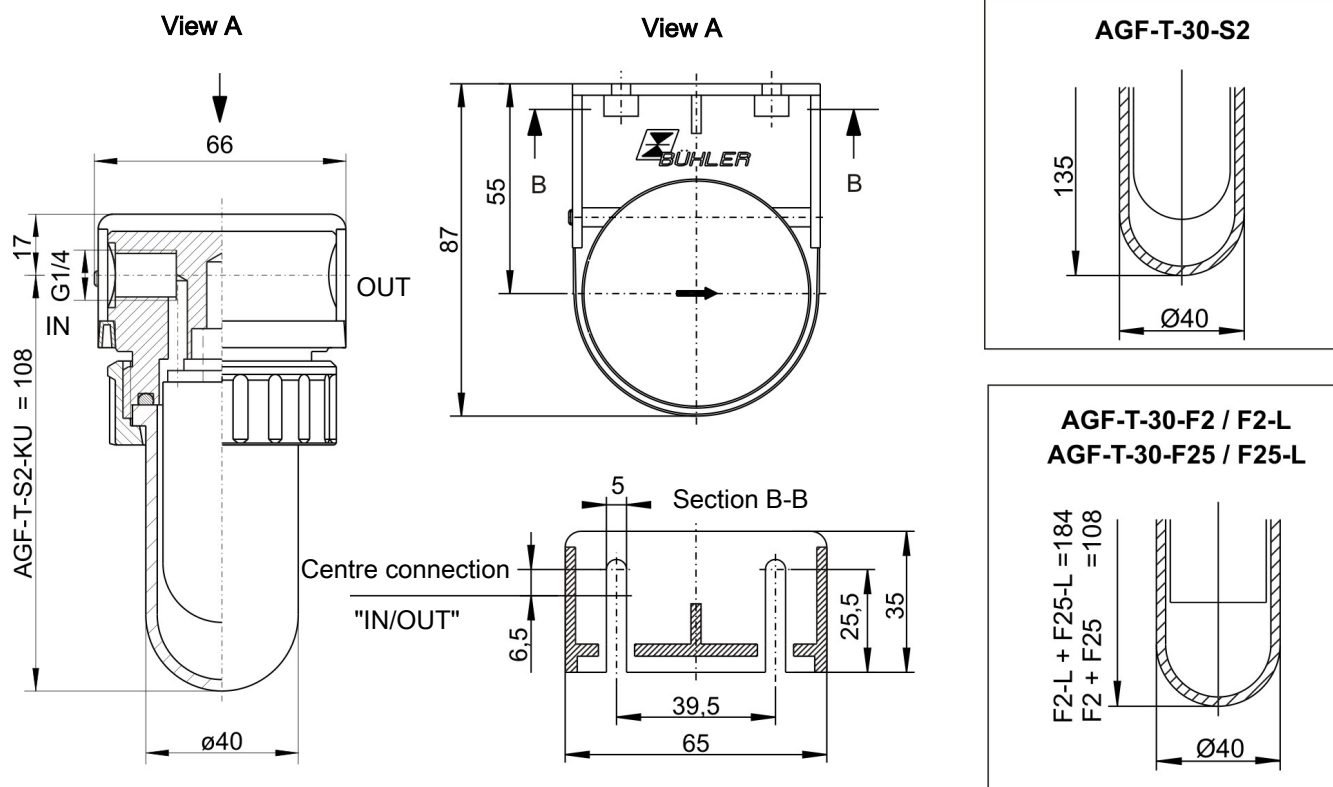
No absorption of trace gasses

Quick response time in systems due to low dead volume

Variable wall mount



## Dimensions

**Use in explosive areas (additional notices):**

The filter meets the fundamental safety requirements of Directive 2014/34/EU and is suitable for use in category 2G, explosion group IIC areas. The filter is not marked, as it does not have an innate ignition source, so Directive 2014/34/EU does not apply.

Flammable gases, explosion group IIB or IIC, which could occasionally be explosive during normal operation may be conveyed through the filter.

**Be sure to observe the relevant operating instructions!**

**Ambient temperature range when used in Ex areas:**  $+5\text{ °C} \leq T_{\text{amb}} \leq +60\text{ °C}$ .

## Technical Data

**AGF-T-30 Fine mesh filter**

Material – Filter head	PTFE
Material – Filter cover	Glass
Material – Gasket	Viton, PTFE shrouded
Operating pressure max.	4 bar
Operating temperature max.	100 °C

## Ordering instructions

**Filter including filter element**

AGF-T-	30-S2	30-S2-KU	30-F2	30-F2-L	30-F25	30-F25-L
Filter fineness:	2 µm	2 µm	2 µm	2 µm	25 µm	25 µm
Item no.:	4151399	4151499	4151799	4151099	4151199	4151299
Element:	S2	S2KU	F2	F2-L	F25	F25-L
Dead volume:	57 ml	50 ml	57 ml	108 ml	57 ml	108 ml
Weight approx.:	0.41 kg	0.35 kg	0.35 kg	0.43 kg	0.35 kg	0.43 kg
permissible explosion group of the external filter area:	IIC	IIC	IIC	IIC	IIC	IIC
permissible explosion group of the internal filter area:	IIC	IIC	IIB	IIB	IIB	IIB

## Filter elements

Item no.	Model	Filter element	Material	Filter fineness	Filter surface	Packaging unit	permissible explosion group of the internal filter area
41010010	S2	Sleeve	Fibreglass	2 µm	80 cm <sup>2</sup>	5 count	IIC
4101002	S2	Sleeve	Fibreglass	2 µm	80 cm <sup>2</sup>	25 count	IIC
41010140	S2KU	Sleeve	Fibreglass	2 µm	61 cm <sup>2</sup>	5 count	IIC
41010150	S2KU	Sleeve	Fibreglass	2 µm	61 cm <sup>2</sup>	25 count	IIC
41030050	F2	Sintered PTFE	PTFE	2 µm	60 cm <sup>2</sup>	5 count	IIB
41020130	F25	Sintered PTFE	PTFE	25 µm	60 cm <sup>2</sup>	5 count	IIB
41020050	F2-L	Sintered PTFE	PTFE	2 µm	125 cm <sup>2</sup>	2 count	IIB
41010120	F25-L	Sintered PTFE	PTFE	25 µm	125 cm <sup>2</sup>	2 count	IIB